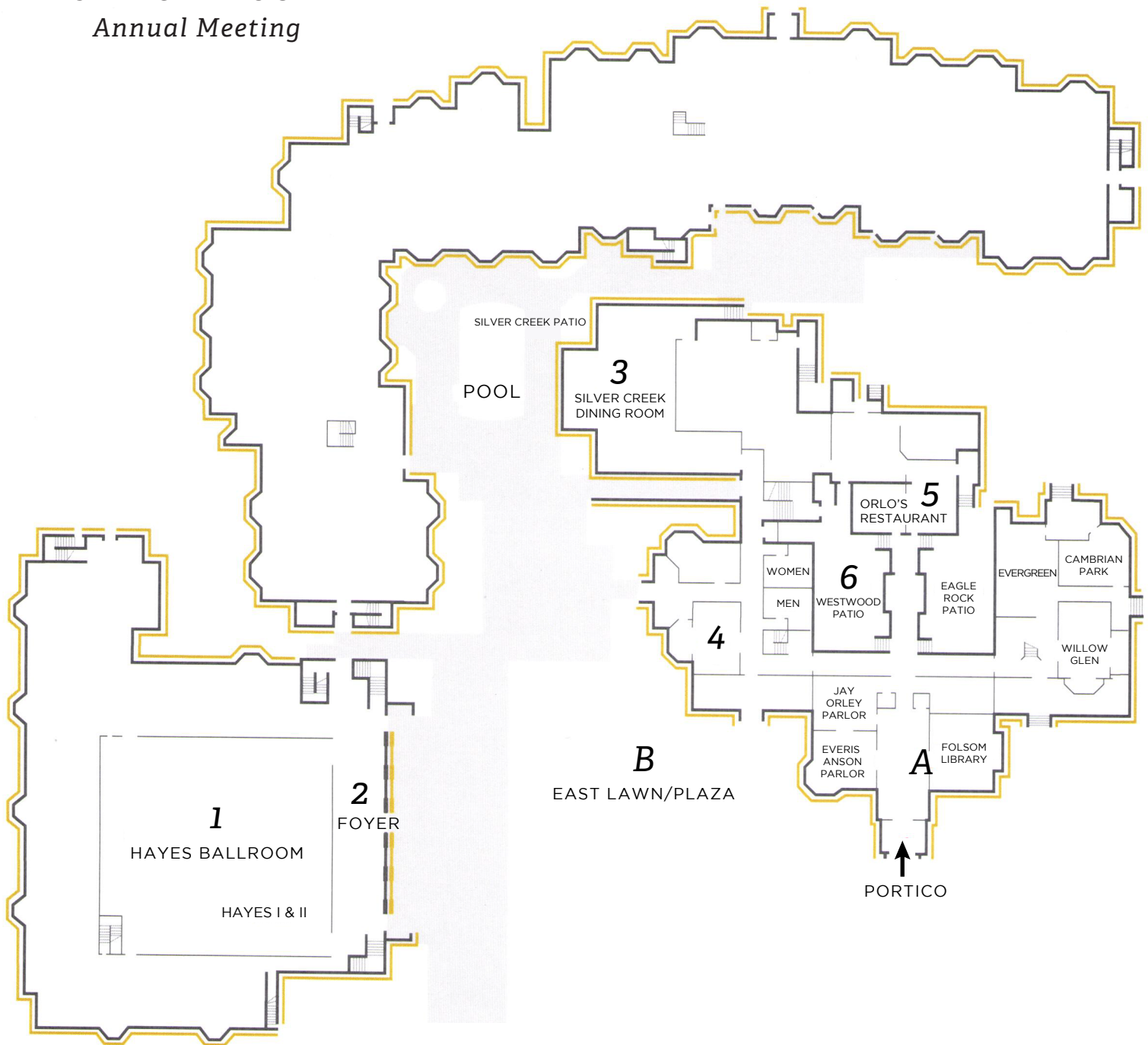


2014  
**SUPERFUND  
 RESEARCH PROGRAM**  
*Annual Meeting*



Dolce Hayes Mansion  
**GROUND FLOOR**

*Portico - Main Entrance*

*A. Hotel Registration Desk*

*B. East Lawn/Plaza*

*1. Hayes Ballroom  
 Main Meeting*

*2. Hayes Ballroom Foyer  
 Meeting Registration Desk;  
 Main Meeting Buffets*

*3. Silver Creek Dining Room*

*Hotel Restaurant*

*Breakfast: 6:30AM - 10:00AM*

*Lunch: 11:30AM - 2:00PM*

*Dinner: 5:30PM - 9:00PM (Tuesday, 11/11 only)*

*4. Palm Plaza Lounge*

*Indoor and Outdoor Bar and Dining*

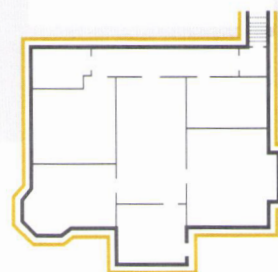
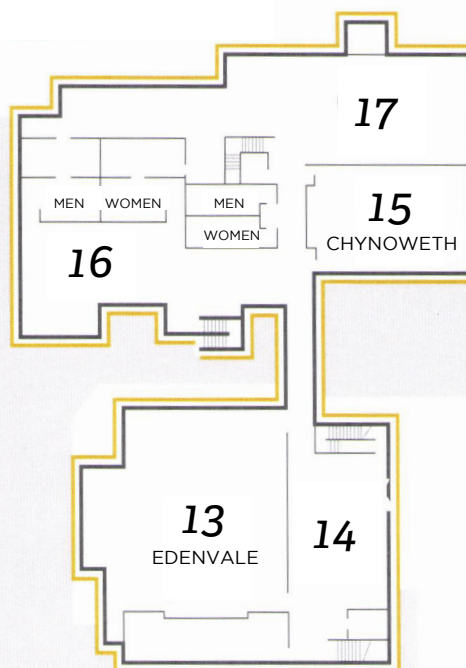
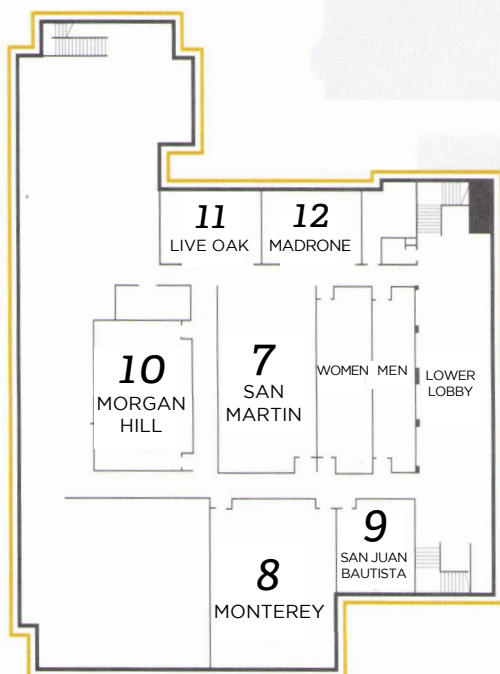
*4:00PM - 11:00PM*

*5. Orlo's Restaurant*

*Open only for PI/Director dinner, Thursday, 11/13*

*6. Westwood Patio*

2014  
**SUPERFUND  
 RESEARCH PROGRAM**  
*Annual Meeting*



*Dolores Hayes Mansion*  
**LOWER LEVEL**

- |                                   |   |
|-----------------------------------|---|
| 7. San Martin Meeting Room        | 13. Edenvale Meeting Room<br>Poster Sessions  |
| 8. Monterey Meeting Room          | 14. Edenvale Foyer<br>Additional Poster Space |
| 9. San Juan Bautista Meeting Room | 15. Chynoweth Meeting Room                    |
| 10. Morgan Hill Meeting Room      | 16. Gym - Open 24 Hours                       |
| 11. Live Oak Meeting Room         | 17. Spa - By Appointment                      |
| 12. Madrone Meeting Room          |   |